

# JBL Synthesis Driver Functionality Guide

**for URC Total Control 2.0**

## Release Notes

Current Version: 1.0.0.5

## Introduction

This driver has been designed to provide two-way control of JBL Synthesis via TCP/IP and RS232. The models supported are:

- SDA7120
- SDA2200

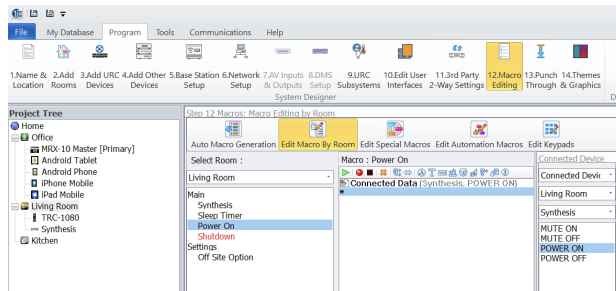
The driver provides the the following features:

- Power On/Off
- Mute On/Off
- Auto-shutdown Control

This driver was tested with firmware version: 1.8.

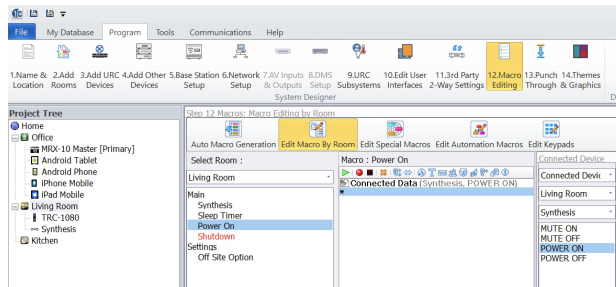
## Power On/Off

The power on/off commands are accessible by adding them to a new or existing macro in Accelerator.



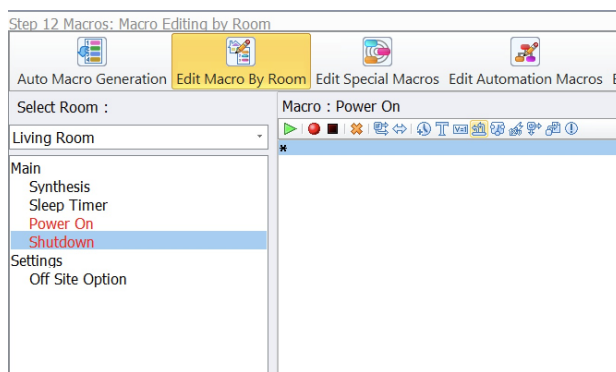
## Power On/Off

The mute on/off commands are accessible by adding them to a new or existing macro in Accelerator.



## Auto-shutdown

The auto-shutdown command is accessible via the **Two-way module command** button from the toolbar under **Program -> 12. Macro Editing**:



Give your command a name and select the appropriate command from **Available Command** - see above for the commands available for each model.

2-Way Module Command

Name :

Auto Shutdown

Available Devices :

Synthesis [Living Room]

Available Command :

Auto Shutdown

Parameters

Timeout (mins)

Disabled

Disabled

20

30

60

120

240

Prev

Next

Result

☐ Save the result

Variable :

Create Variable

OK

Cancel